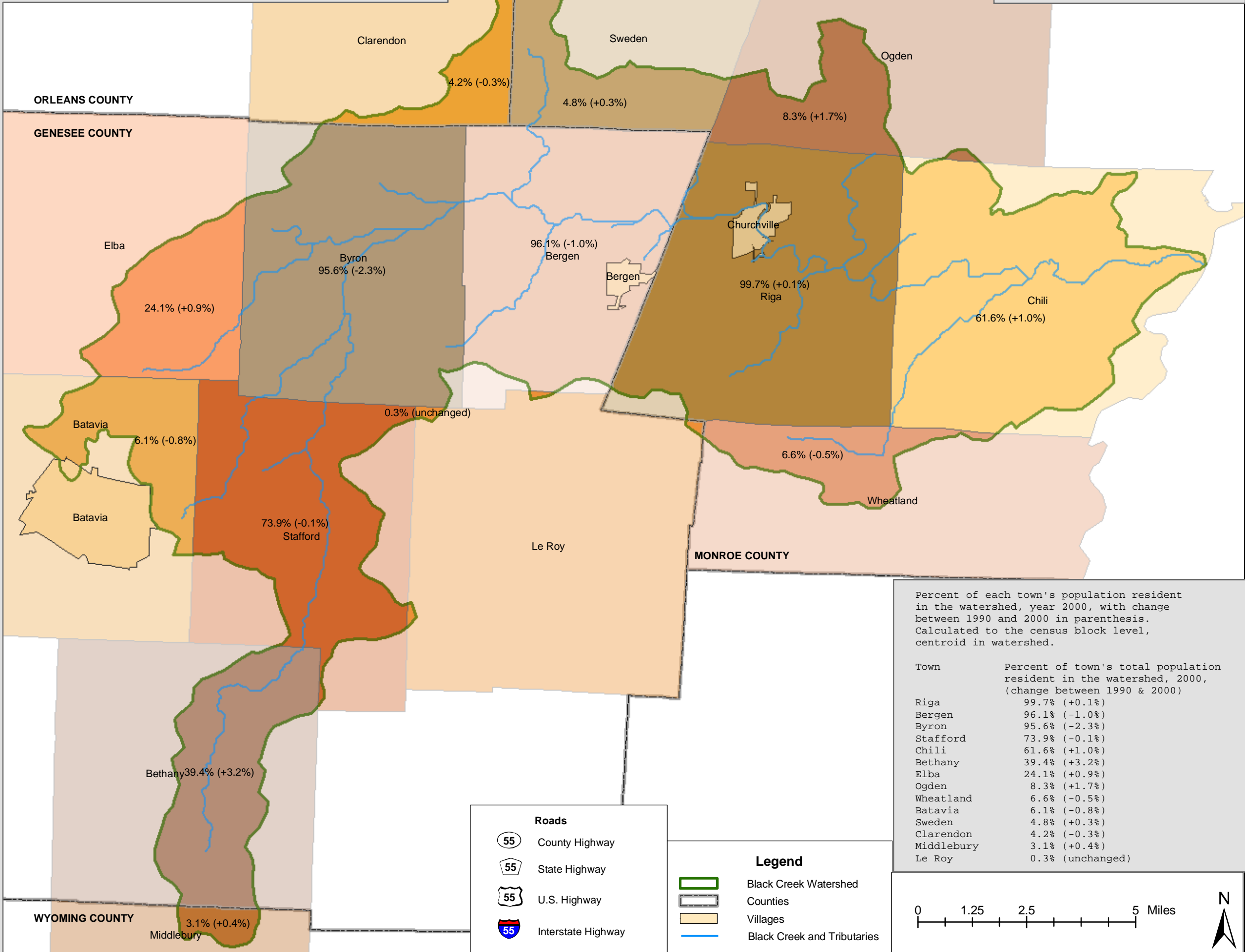


# Black Creek Watershed

Prepared by SUNY Brockport Consulting Team  
for the Black Creek Watershed Coalition  
May 2003

## Watershed Population in Each Town, 2000 (change 1990 to 2000)



Percent of each town's population resident in the watershed, year 2000, with change between 1990 and 2000 in parenthesis. Calculated to the census block level, centroid in watershed.

Town	Percent of town's total population resident in the watershed, 2000, (change between 1990 & 2000)
Riga	99.7% (+0.1%)
Bergen	96.1% (-1.0%)
Byron	95.6% (-2.3%)
Stafford	73.9% (-0.1%)
Chili	61.6% (+1.0%)
Bethany	39.4% (+3.2%)
Elba	24.1% (+0.9%)
Ogden	8.3% (+1.7%)
Wheatland	6.6% (-0.5%)
Batavia	6.1% (-0.8%)
Sweden	4.8% (+0.3%)
Clarendon	4.2% (-0.3%)
Middlebury	3.1% (+0.4%)
Le Roy	0.3% (unchanged)

**Roads**

- County Highway
- State Highway
- U.S. Highway
- Interstate Highway

**Legend**

- Black Creek Watershed
- Counties
- Villages
- Black Creek and Tributaries

0 1.25 2.5 5 Miles

DISCLAIMER: A degree of error is inherent in all maps. This map is distributed "AS-IS" without warranties of any kind, either expressed or implied, including but not limited to warranties of suitability to a particular purpose or use. This map is for illustration purposes only. It is not suitable for site-specific decision making, should not be construed as a legal document or survey instrument, and should not be used for making financial or any other commitments.